



Resources

Chris Rimmer, Cenex



Belfast
City Council



Everything will be available on the Knowledge Repository

Knowledge Repository

Equipping and resourcing Local Authorities to deliver EV Infrastructure (EVI).



What would you like to search for?

- Build long-term capacity and capability in the sector;
- Upskill public sector, especially those with limited experience in this arena;
- Embed best practice to enable independent actions and reduce the long-term reliance on consultants;
- Provide practical recommendations, including templates; and
- Information on where to go to find out more

Latest additions and changes to guidance

Recently added

Concession Contract Templates

Procurement | Stage 5

Roadshow 10

LEVI Support Programme | Stage 8

Needs Assessment

Procurement | Stage 5

Requirement Writing

Procurement | Stage 5

Relief Events

Procurement | Stage 5

Business Continuity

Operations | Stage 7

Site Assessment

Mobilisation & Installation | Stage 6

Change Management

Operations | Stage 7

Recently updated

Strategy Inputs

Developing your Strategy | Stage 3

Site Surveys

Mobilisation & Installation | Stage 6

Commissioning

Mobilisation & Installation | Stage 6

Planning, Permits & Permissions

Delivery Planning | Stage 4

Requirement Writing

Procurement | Stage 5

Use Cases

Developing your Strategy | Stage 3

Installation

Mobilisation & Installation | Stage 6

User Engagement & Feedback

Operations | Stage 7



Localised quantitative
data and modelling

Equipping and enabling the
delivery of EV Infrastructure

National EV Insight & Support

Supplying reliable, independent, up-to-date information about Electric Vehicles and EV Infrastructure.



INSIGHTS TOOLKIT

[View →](#)



REPOSITORY

[View →](#)



NETWORKING

[View →](#)



EVENTS

[View →](#)

A curated environment to
connect Public Sector Officers

Engaging, educating and
equipping those involved
in deploying EVI

Modelling

Inform robust strategies, build persuasive business cases, attract investors and demonstrate commitment to sustainability with data driven insights.

Localised quantitative data and modelling

Stay ahead of the curve with comprehensive insights on current status, future projections, potential benefits and implementation planning for EVs and EVI.



Current Status



Future Projections



Potential Benefits



Implementation Planning

Upcoming updates

- Version 6: Deploying June 2025
 - Updated metrics to measure progress
 - Improved projections to reflect ZEV Mandate
 - New data from Department for Transport
 - New data from Zapmap

Mapping

Explore your area

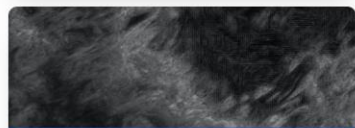
Work out what needs to be installed where with geospatial data and analysis, including unique datasets from NEVIS partners.



Detailed EVI Data (upgrade required)



Find the best EV Charger Locations



Geospatial Data for LAs



Localised EV Uptake Demo

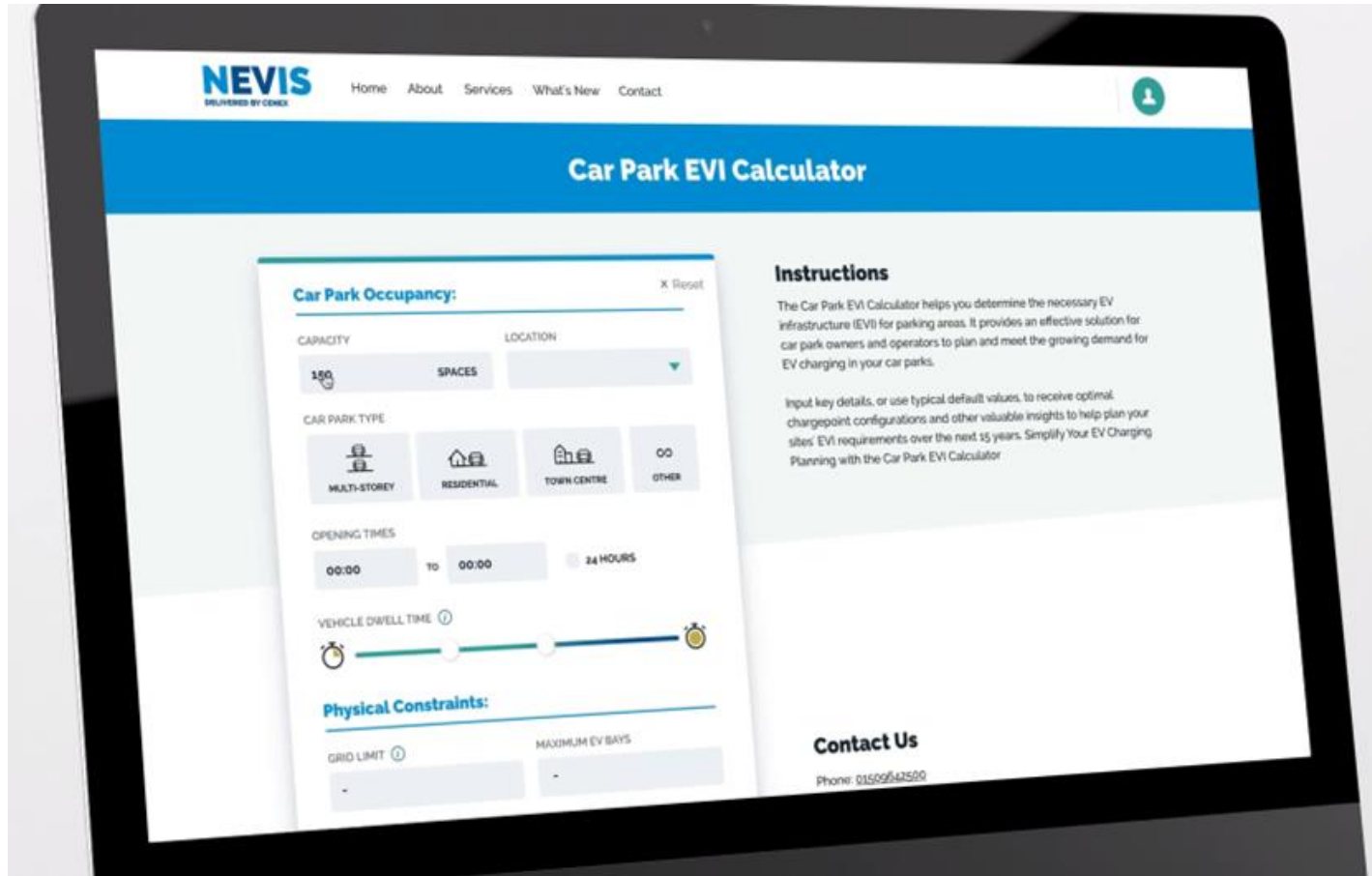
Motability
Operations

Location of Motability Drivers

Recent updates focus on implementation

- Upgrades available
 - Experian: hyper-local EV uptake curves by ward
 - Field Dynamics: EVMap, FleetMap, Pavement Width
 - Zapmap: Detailed data on chargepoints
- Regularly updated datasets included in basic package
 - Motability operations customer locations
 - Co-charger host locations
 - Cenex Early Adopter Index
 - Cenex Residential Charging Index
 - Vauxhall Electric Streets chargepoint requests

Car Park Calculator^{BETA} applies NEVIS modelling to specific sites



NEVIS
DELIVERED BY CENEX

Home About Services What's New Contact

Car Park EVI Calculator

Car Park Occupancy: X Reset

CAPACITY: 100 SPACES LOCATION: ▼

CAR PARK TYPE:

MULTI-STOREY RESIDENTIAL TOWN CENTRE OTHER

OPENING TIMES: 00:00 TO 00:00 24 HOURS

VEHICLE DWELL TIME: ⌚ ————— ⌚

Physical Constraints:

GRID LIMIT: 1 MAXIMUM EV BAYS: 1

Contact Us
Phone: 01595 42500

Instructions
The Car Park EVI Calculator helps you determine the necessary EV infrastructure (EVI) for parking areas. It provides an effective solution for car park owners and operators to plan and meet the growing demand for EV charging in your car parks.

Input key details, or use typical default values, to receive optimal chargepoint configurations and other valuable insights to help plan your sites' EVI requirements over the next 15 years. Simplify Your EV Charging Planning with the Car Park EVI Calculator

Specifically designed for car park owners and operators to plan and assess the necessary EVI for their parking areas.

An effective solution to analyse and accommodate EV parking and charging need efficiently and profitably.

LAs – Join the Networking channel!

Cross pave

Public Liability Insurance for Cross Pavement Solutions

Hi All

Hi All, we are due to roll out cross pavement products in Richmond, SW London. We think we should require the applicant to

Solar on car parks? EVI & Planning? DESNZ call for evidence (deadline 18 June)

Hi [LA Decarbonising Transport](#) - DESNZ is seeking views on

- (1) **proposal to mandate the installation of solar canopies on new outdoor car parks, subject to certain exemptions**
- (2) **current planning policy relating to EV charging infrastructure (EVI)**

Consultation closes **18 June 2025**.

Section 1: solar canopies

DESNZ is seeking evidence and feedback on a proposal to mandate the introduction of solar canopies on new outdoor car parks and explore opportunities for deployment on existing car parks, above a certain size; this includes car parks in both public and private ownership. We are considering, subject to this call for evidence, whether multi-storey car parks and residential car parks should be in

Many thanks,
Kate

I'm looking to create an opportunity for someone to learn from the ground up so that they can work with and oversee installations by our CPOs and attend emergency call-outs if the CPO operative can't get there.

Any insight or pointers greatly appreciated. Thank you.

aim for injury, damage, loss or
and can't find one that offers
v have you otherwise covered

ance? Looking at the IfATE
ne: [Highway electrical](#)